

A14 Cambridge to Huntingdon Improvement Scheme September to October 2019

Section 1 and 2 – Alconbury & Ellington to East Coast Main Line
Section 3 - East Coast Main Line to Swavesey
Sections 4 and 5 - Swavesey to Milton
Section 6 – Huntingdon

Traffic Management:

Sections 1 and 2: Weeknight closures of the northbound A1 between Buckden and Brampton Hut will continue until Friday 18 October. From Monday 7 October, the closure will include Brampton Hut to Alconbury, also until 18 October.

On the A1 southbound, overnight closures between Alconbury and Brampton Hut will continue until Wednesday 23 October (including Saturday 19). Until Friday 4 October this will include the A1 between Brampton Hut and Buckden.

On the westbound A14 between Brampton Hut (junction 21) and Ellington (junction 20) there will be weekday overnight closures (8pm to 6am) from 7-11 October and from 28 October to 1 November, when the eastbound carriageway between Ellington and Brampton Hut will also be closed.

Section 3: The A1198 Ermine Street will be closed from Saturday 12 October to Sunday 13 between 7am and 7pm each day. Full details can be found at www.trafficengland.com

Sections 4: There will be a full weekend closure eastbound between junction 26, St Ives and junction 29, Bar Hill on 5-6 October. This is to enable the switching of eastbound traffic onto the new carriageway between Swavesey and Lolworth and the opening of the new eastbound exit slip road at junction 28.

The new Lolworth bridge will open for traffic to and from the village later in October, on a date to be confirmed. At the end of October there will be several changes in the way traffic travels between junction 29, Bar Hill, and junction 30, Dry Drayton/Oakington. These will not affect access to and from Bar Hill. Full details will be available nearer the time.

Section 5: Work on the east section of the Milton roundabout at junction 33 is scheduled for the weekend of 5-6 October.

Construction Activities:

Sections 1 & 2: The southward extension of Woolley Road (local access road) is complete, with access switching from the northbound A1 to the new A14 Ellington junction. Currently traffic uses the eastbound A14 to join and exit Woolley Road. This will change after the opening of the A14 Huntingdon southern bypass, when the junction will be in full use.

You can contact us on our dedicated A14 Public Helpline 0800 270 0114
Scheme information is also available at our website
www.highwaysengland.co.uk/A14C2H and you can also follow us at:

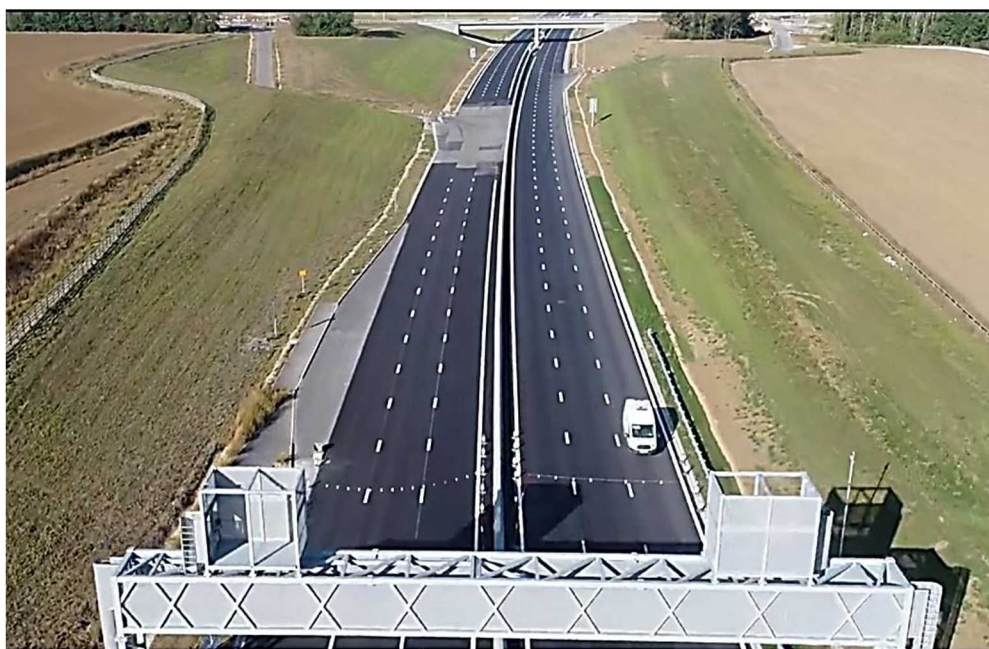


A14 Cambridge to Huntingdon Improvement Scheme September to October 2019

Surfacing is well underway on the new A14 Huntingdon bypass and street lights are being installed on the elevated link roads between the A14 and A1 (pictured below). Work on gantries and communications systems continues.



Section 3: Work on the A14 Huntingdon southern bypass, pictured below, is in its final stages. Surfacing and white lining will be complete in October and gantries are being fitted with electronic signs. Work on side roads and the bridges crossing the new road is also well advanced. Owing to bad weather restrictions, work to complete surfacing, paths and verges on the A1198, Ermine Street junction with the A14, will require another weekend closure. The last bridge in Section 3 at New Barns Lane, is almost complete.



You can contact us on our dedicated A14 Public Helpline 0800 270 0114
Scheme information is also available at our website
www.highwaysengland.co.uk/A14C2H and you can also follow us at:



A14 Cambridge to Huntingdon Improvement Scheme September to October 2019

Sections 4: Construction of the new local access road tie-ins around Bar Hill and Oakington continues.

Once eastbound traffic has moved to a new alignment between Swavesey and Lolworth at the start of October, construction of the remained of the carriageway will begin.

Installation of suspension cables which will support the new pedestrian and cycle bridge at Swavesey is well underway, as pictured. The cables will then be tensioned in readiness for completion of this structure.



A similar bridge will span the A14 at Bar Hill and the pylons are being constructed in the fabrication yard which can be seen from the road as you pass Bar Hill.

Section 5: Piling works beside Kings Hedges Bridge continue during the day to avoid causing disturbance to nearby residents at night. Surfacing works at junction 33, Milton will start in the first few weeks of October, while installation of the environmental barrier continues throughout this section.



You can contact us on our dedicated A14 Public Helpline 0800 270 0114
Scheme information is also available at our website
www.highwaysengland.co.uk/A14C2H and you can also follow us at:

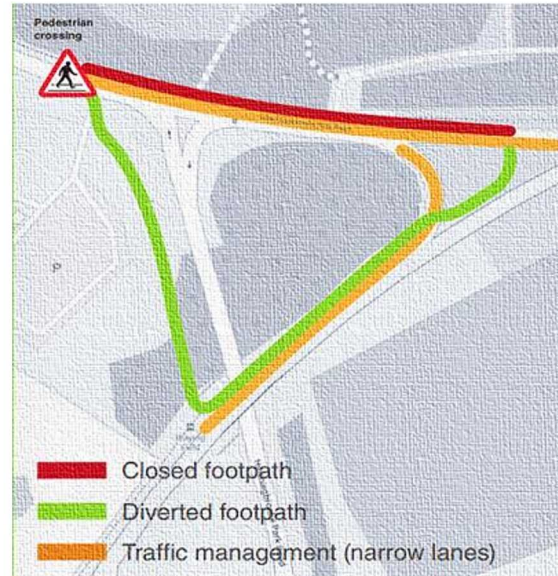


A14 Cambridge to Huntingdon Improvement Scheme September to October 2019

Section 6: Utilities diversions, drainage work and vegetation clearance continue on Hinchingsbrooke Park road and footpath closures and diversions remain as shown right. Vegetation clearance will be carried out in the station car park in early October.

Following the completion of archaeological investigations, utilities works will start on Mill Common soon. Construction work will also continue on the pond within the Hinchingsbrooke loop.

We were pleased to welcome over 300 members of the public to the recent information exhibitions we held in Huntingdon. These detailed our current and planned work in the town. For the latest information about our work in Huntingdon, visit our [Huntingdon page](#).



You can contact us on our dedicated A14 Public Helpline 0800 270 0114
Scheme information is also available at our website
www.highwaysengland.co.uk/A14C2H and you can also follow us at:



A14 Cambridge to Huntingdon Improvement Scheme September to October 2019

Community News: In mid-September, the Cambridge Convoy Refugee Action Group (CamCRAG), which sends convoys of volunteers and aid from the Cambridge region regularly to help refugees in Europe, appealed to the A14 for help with 'Tentfest'. Our team was pleased to help and provide a welfare unit and water bowser to assist with the 'festival of tents' which saw over 90 volunteers refurbish a container load of tents, which had been collected from national festivals. In teams they cleaned, erected, dismantled and packed enough tents to house over 600 people. The tents will be transported to refugee aid centres in Europe. The A14's Mandeep Sandhu was on hand all weekend to assist with the charity's rewarding work.



Our A14 Legacy Fund has provided £30,000 towards the cost of pigeon-proofing Rectory Farm bridge in Godmanchester. The path below the bridge, pictured left, is the only pedestrian access under the A14 in Godmanchester and has been

blighted by an infestation of pigeons in recent years. Despite Huntingdon District Council's fortnightly efforts to clean the foot paths, the scale of the infestation and the damage it has caused meant that within hours the pathways were covered in pigeon excrement, feathers and dead birds.. In the final week of September, Highways England Operations team carried out the work to clean the area, remove the pigeons and install spikes which will prevent further infestations.

You can contact us on our dedicated A14 Public Helpline 0800 270 0114
Scheme information is also available at our website
www.highwaysengland.co.uk/A14C2H and you can also follow us at:

